

# The Dragonfly

a luxurious recreational retreat

**Fun Fact:** There are more than 5,000 known species of dragonflies, all of which (along with damselflies) belong to the order Odonata, which means "toothed one" in Greek and refers to the dragonfly's serrated teeth.



The Dragonfly (drag-uh-n-flahy), being a very tiny yet unique insect describes this unit inside and out. This travel trailer or tiny home easily catches your eye with its intricate exterior architectural designs. Exterior features such as the drop down decks and the fascinating roof design make it one of a kind. This 160 square foot tiny home offers all the needed amenities of living comfortably. Not to mention that it is loaded with some of the most unique custom storage options, just to make sure you have optimal space to store all of your belongings. Comfortably sleeping up to three adults, the Dragonfly features a single standard size bed in the spacious loft bedroom as well as a pull out couch in the living quarters. Not only will you fall in love with the custom hand crafted cabinetry and interior decor but this tiny house will sweep you away with all of the natural light that shines into it making you forget you are in a tiny home. With six windows, two skylights, and two separate sets of double handcrafted french doors, the Dragonfly will allow you to sit and enjoy the beautiful outside scenery from almost any area of the home. The ultimate factor being that you have the ability to pull this tiny house down the road with you makes for endless possibilities and memories to be made with in it.

Design copyright of Robinson Residential Design Inc.

## Unique Features

- 160 sq.ft.
- contemporary design
- vaulted ceilings
- multiple exterior finishes
- loft area
- two hinged decks
- rolling stair/storage unit
- retractable kitchen table
- pull out sofa bed
- built in shelves
- wood interior
- off the grid option

## Typical "UV" Construction Features

- patented #6018921 insulated floor system
- closed cell spray foam in walls, ceilings, and floor
- Pella windows and doors
- Kohler plumbing products
- Sea-Gull LED lighting
- Custom cabinets & built-ins
- solid surface countertops
- and more...



3834 E. Puetz Road | Oak Creek, Wisconsin 53154

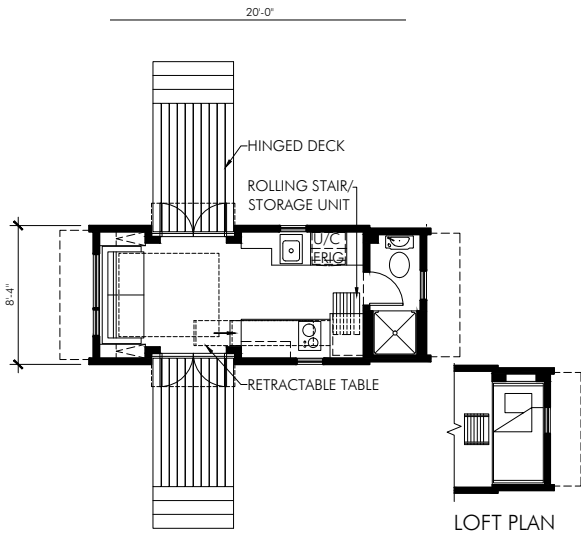
T: 414.702.9906 | F: 414.762.0955

sales@utopian-villas.com | www.utopian-villas.com

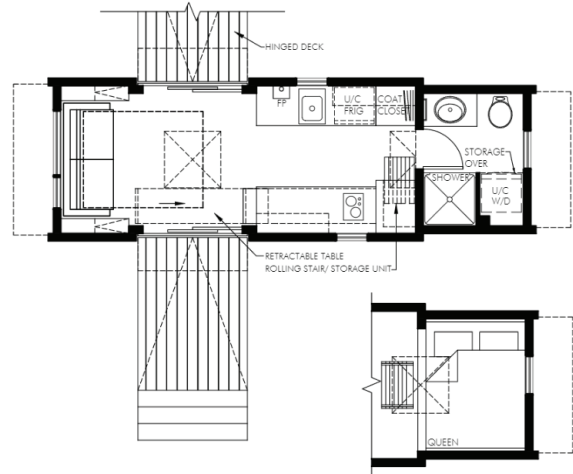


# Dragonfly Floor Plan

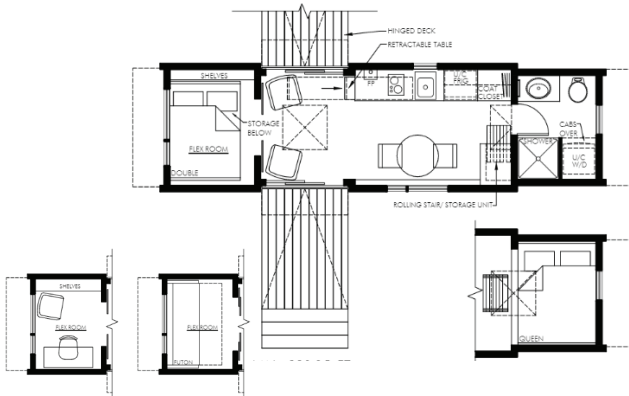
## 20' Model



## 24' Model



## 28' Model



Design copyright of Robinson Residential Design Inc.

