

The Centipede

a luxurious recreational retreat



Design copyright of Robinson Residential Design Inc.

Unique Features

- 100 sq.ft.
- contemporary design
- vaulted ceilings w/large skylight
- multiple exterior finishes
- loft
- hinged deck
- rolling ladder
- flip up table
- swinging glass entry doors
- built in shelves
- wood interior
- off the grid option

Typical "UV" Construction Features

- patented #6018921 insulated floor system
- closed cell spray foam in walls, ceilings, and floor
- Pella windows and doors
- Kohler plumbing products
- Sea-Gull LED lighting
- custom cabinets & built-ins
- solid surface countertops
- and more...



Fun Fact: The Centipede has the ability to regenerate their legs when they're cut and can also sacrifice their legs when being attacked by a more fearsome predator. Centipedes continue to regrow their lost legs, at reduced strength, every time they molt until they reach adulthood.

The Centipede (sen-tuh-peed), known for its common name of "100 legs" defines this travel trailer or tiny home by the square footage alone. Don't let its size fool you because this 100 square foot tiny home offers a hinged deck with swinging glass entry doors, giving you the chance to sit and stare all day or night long! Glancing at the outside, the Centipede's single sloped roof line and multiple exterior finishes may give the impression that there is no space inside. However, the loft bedroom, loft storage and the rolling ladder will prove you wrong as we enter this tiny home. Another deception of the Centipede's outside size is the toilet and shower built underneath the loft storage space. The large skylight illuminates the main area which includes a mini fridge, a custom closet area, a couch or love seat, a retractable kitchen table and built in shelves! With the centipede being considered one of the oldest known animals on the planet, it is no wonder why we named this tiny home after it. Wherever your home takes you, be it prairies, savannas, tropical rain forests, or if you prefer urban areas close to other humans, the Centipede definitely lives up to its name.



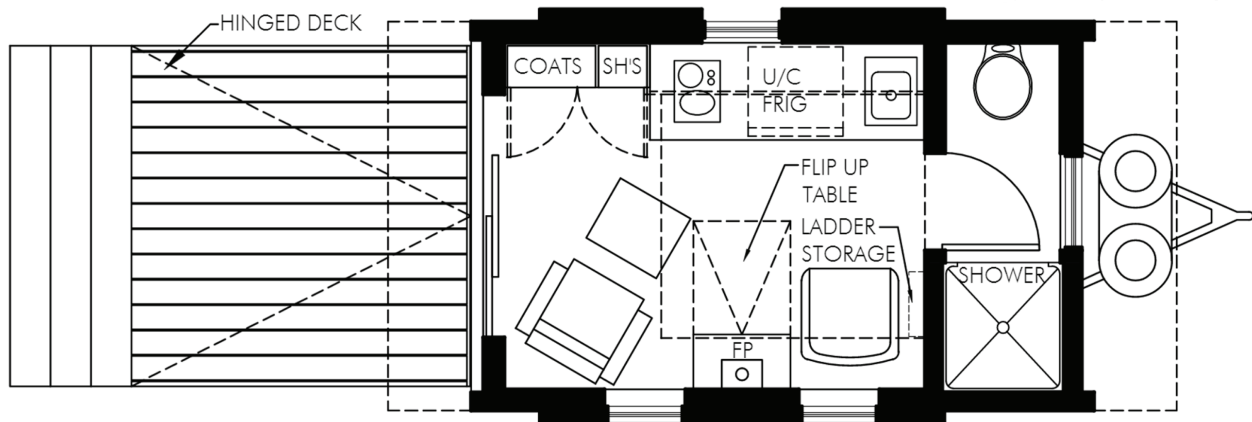
3834 E. Puetz Road | Oak Creek, Wisconsin 53154
T: 414.702.9906 | F: 414.762.0955
sales@utopian-villas.com | www.utopian-villas.com



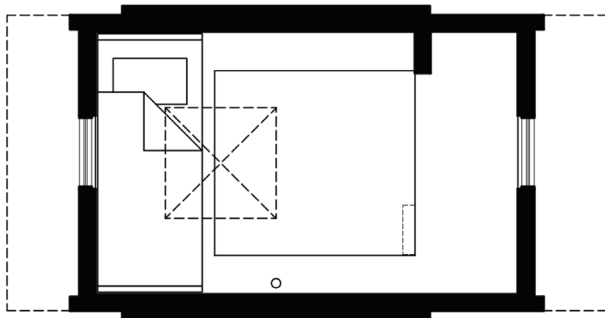
Rev. 2-17

Centipede Floor Plan

Main Floor



Loft



Design copyright of Robinson Residential Design Inc.

